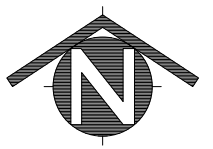
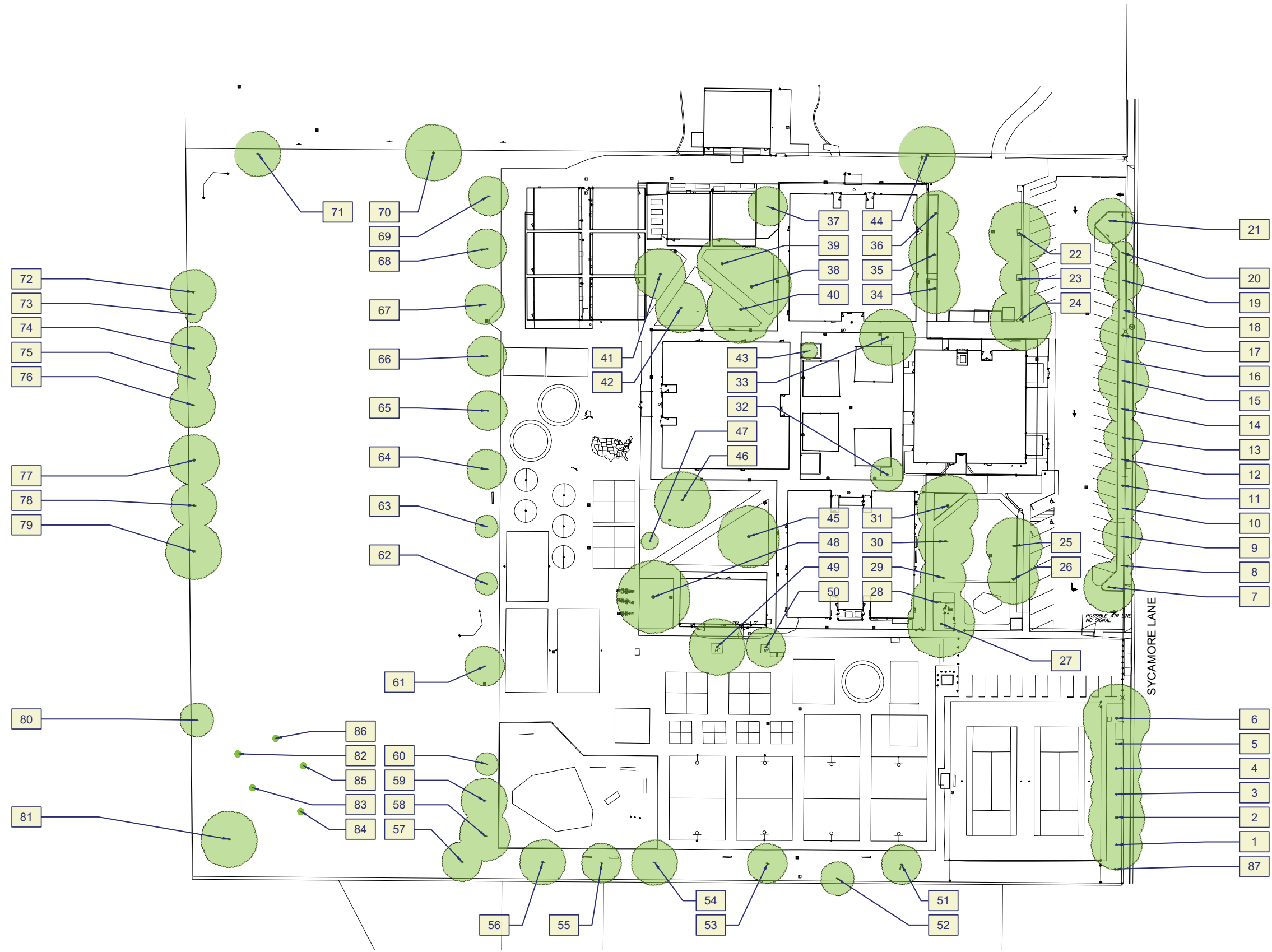


**Robert E. Willett Elementary School**  
1207 Sycamore Ln, Davis, CA 95616



## Tree Data

ID	Tree species - Common Name	Botanical Name	Deciduous/ Evergreen	Approx. Height Range (ft)	Approx. Canopy Width (ft)	Trunk Size (DBH) (in)	Observable Health Condition	Notes
W-1	Redwood	Sequoia sempervirens	Evergreen	74	21	25	No observable problems	
W-2	Redwood	Sequoia sempervirens	Evergreen	76	21	25	Leaning a little, competing leaders	
W-3	Redwood	Sequoia sempervirens	Evergreen	71	21	25	Branches drop	Header board around?
W-4	Redwood	Sequoia sempervirens	Evergreen	71	21	25	Branches drop, broken branches in canopy	
W-5	Redwood	Sequoia sempervirens	Evergreen	71	21	25	Branches drop	
W-6	Redwood	Sequoia sempervirens	Evergreen	76	21	25	Branches drop, leaning	
W-7	Chinese Pistache	Pistacia chinensis	Deciduous	36	38	12	Sucker growth	
W-8	Crape myrtle	Lagerstroemia indica	Deciduous	17	8	2	No observable problems	Multi-trunk
W-9	London Plane	Platanus x acerifolia	Deciduous	23	17	9	Large dead limb in canopy	
W-10	Crape myrtle	Lagerstroemia indica	Deciduous	21	13	2	No observable problems	Multi-trunk
W-11	London Plane	Platanus x acerifolia	Deciduous	34	21	11	Limb breaks	
W-12	Crape myrtle	Lagerstroemia indica	Deciduous	21	7	3	No observable problems	Multi-trunk
W-13	London Plane	Platanus x acerifolia	Deciduous	35	21	9	Surface root	
W-14	Crape myrtle	Lagerstroemia indica	Deciduous	27	15	4	Suckers	Multi-trunk
W-15	London Plane	Platanus x acerifolia	Deciduous	38	17	10	Some broken branches	
W-16	Crape myrtle	Lagerstroemia indica	Deciduous	23	11	3	No observable problems	Multi-trunk
W-17	London Plane	Platanus x acerifolia	Deciduous	42	29	12	No observable problems	Conflict with light pole
W-18	Crape myrtle	Lagerstroemia indica	Deciduous	26	6	3	No observable problems	Multi-trunk
W-19	London Plane	Platanus x acerifolia	Deciduous	36	21	8	Some broken branches	
W-20	Crape myrtle	Lagerstroemia indica	Deciduous	23	13	3	No observable problems	Multi-trunk
W-21	Chinese Pistache	Pistacia chinensis	Deciduous	36	25	13	Waterspouts	
W-22	London Plane	Platanus x acerifolia	Deciduous	35	29	13	No observable problems	
W-23	London Plane	Platanus x acerifolia	Deciduous	35	17	12	Waterspouts, some broken branches	
W-24	Chinese Pistache	Pistacia chinensis	Deciduous	38	25	16	Waterspouts	
W-25	London Plane	Platanus x acerifolia	Deciduous	48	34	13	No observable problems	
W-26	London Plane	Platanus x acerifolia	Deciduous	42	39	12	No observable problems	Planted 2' from edge of concrete and will eventually be a problem. It looks like has already started to lift the concrete
W-27	Shiny Xylosma	Xylosma congestum	Evergreen	42	17	15	Multi stem (2) low crotch, sucker growth, has large limb failures up in the canopy, possible hazard	
W-28	Shiny Xylosma	Xylosma congestum	Evergreen	39	22	13	Multi stem (2) low crotch, sucker growth, has large limb failures up in the canopy, possible hazard	
W-29	Chinese Pistache	Pistacia chinensis	Deciduous	45	20	11	Narrow due to crowding of adjacent tree, and most growth is on the NW side	6" of bark has been added around the base of the tree which could promote trunk rot
W-30	Ash	Fraxinus	Deciduous	36	39	12	Surface roots, sucker growth	

Data Collection - Robert E. Willett Elementary School - Tree Data

W-31	London Plane	Platanus x acerifolia	Deciduous	62	62	21	No observable problems	Adjacent concrete is lifting, and bark has been added around the trunk which may cause trunk rot
W-32	Chinese Pistache	Pistacia chinensis	Deciduous	25	19	15	Gravity of trunk, very bad pruning, competing leaders	
W-33	Chinese Pistache	Pistacia chinensis	Deciduous	44	46	18	No observable problems	
W-34	Chinese Pistache	Pistacia chinensis	Deciduous	34	19	11	Waterspouts, competing branches	
W-35	Oranmental Pear	Pyrus calleryana	Deciduous	32	11	13	Leaning (Imbalanced pruning)	
W-36	Chinese Pistache	Pistacia chinensis	Deciduous	40	34	12	No observable problems	
W-37	Oranmental Pear	Pyrus calleryana	Deciduous	25	20	10	Fair, trunk lean and a lot of sucker growth throughout the tree	Typical plum tree
W-38	London Plane	Platanus x acerifolia	Deciduous	78	62	25	Healthy, one large lower branch may be a hazard concern	
W-39	Redwood	Sequoia sempervirens	Evergreen	73	34	25	No observable problems	
W-40	Sawleaf Zelkova	Zelkova serrata	Deciduous	59	39	24	Healthy, one cluster of mistletoe toe in tree	Close to concrete and is noticeably lifting it, crowded by London plane and most of the growth is going away from the London plane
W-41	Honey Locust	Gleditsia triacanthos	Deciduous	45	45	17	No observable problems	
W-42	London Plane	Platanus x acerifolia	Deciduous	39	42	16	Some dead branches	Tree had one major low branch leaning over building, may be a hazard some day
W-43	Japanese Maple	Acer palmatum	Deciduous	13	6	1	Competing branches	Need pruning
W-44	Coast Live Oak	Quercus agrifolia	Evergreen	38	29	11	No observable problems	Right against the fence, at the property line
W-45	Honey Locust	Gleditsia triacanthos	Deciduous	44	42	21	Some competing branches	
W-46	London Plane	Platanus x acerifolia	Deciduous	48	38	16	Competing leaders, some broken branches	
W-47	London Plane	Platanus x acerifolia	Deciduous	21	13	4	No observable problems	
W-48	Japanese Pagoda Tree	Styphnolobium japonicum	Deciduous	46	55	32	Potential split branches	
W-49	Chinese Hackberry	Celtis sinensis	Deciduous	42	44	18	Some bark rubbed off in canopy	
W-50	Chinese Hackberry	Celtis sinensis	Deciduous	34	38	11	Multiple branches attached at one point	Chained to picnic tables. Might need to remove the chain.
W-51	Ash	Fraxinus	Deciduous	31	22	8	Trunk damage on W side, noticeable decay on several branches	
W-52	Oranmental Pear	Pyrus calleryana	Deciduous	25	28	8	Volunteer multi trunk along fence line	Remove, half dead, multi
W-53	Oranmental Pear	Pyrus calleryana	Deciduous	34	31	9	No observable problems	Typical pear with narrow branch attachments
W-54	Ash	Fraxinus	Deciduous	25	22	10	No observable problems	
W-55	Oranmental Pear	Pyrus calleryana	Deciduous	25	14	7	Lopsided, sucker growth, scar on west side	Hacked on south side
W-56	Oranmental Pear	Pyrus calleryana	Deciduous	45	34	13	Lopsided, leaning NE, poor	
W-57	Chinese Pistache	Pistacia chinensis	Deciduous	22	22	9	Major trunk damage, sucker growth in branches, generally unhealthy	
W-58	London Plane	Platanus x acerifolia	Deciduous	36	34	13	Surface roots, some dead branches	
W-59	London Plane	Platanus x acerifolia	Deciduous	50	42	16	No observable problems	
W-60	London Plane	Platanus x acerifolia	Deciduous	20	11	3	Not very well rooted at the moment, trunk damage at base	

W-61	Sawleaf Zelkova	Zelkova serrata	Deciduous	31	22	6	Minor damage at base, some overlapping branches	
W-62	Sawleaf Zelkova	Zelkova serrata	Deciduous	22	17	4	Trunk damage at base	
W-63	Sawleaf Zelkova	Zelkova serrata	Deciduous	18	14	4	Trunk damage at base	
W-64	Sawleaf Zelkova	Zelkova serrata	Deciduous	22	34	8	Trunk damage at base	
W-65	Sawleaf Zelkova	Zelkova serrata	Deciduous	22	34	8	Trunk damage at base	
W-66	Sawleaf Zelkova	Zelkova serrata	Deciduous	22	34	9	Trunk damage at base	
W-67	Sawleaf Zelkova	Zelkova serrata	Deciduous	22	34	9	Trunk damage at base	
W-68	Sawleaf Zelkova	Zelkova serrata	Deciduous	22	22	7	Trunk damage at base	
W-69	Sawleaf Zelkova	Zelkova serrata	Deciduous	28	22	8	Trunk damage at base	
W-70	Golden Rain tree	Koelreuteria paniculata	Deciduous	28	25	13	Trunk damage on west side. Some surface roots and lean towards NE	
W-71	Golden Rain tree	Koelreuteria paniculata	Deciduous	25	28	13	Several dead branches otherwise healthy looking, minor surface roots	
W-72	Deador Cedar	Cedrus deadora	Evergreen	62	42	15	Lopsided due to neighboring tree, otherwise healthy	
W-73	Redwood	Sequoia sempervirens	Evergreen	11	8	3	No observable problems	
W-74	Deador Cedar	Cedrus deadora	Evergreen	59	34	14	No observable problems	
W-75	Redwood	Sequoia sempervirens	Evergreen	36	22	10	Crowded by adjacent tree, most growth is at the top, shrub growing at base	
W-76	Deador Cedar	Cedrus deadora	Evergreen	56	39	11	No observable problems	
W-77	Deador Cedar	Cedrus deadora	Evergreen	59	39	18	No observable problems	
W-78	Deador Cedar	Cedrus deadora	Evergreen	48	45	12	Broken Leader	
W-79	Deador Cedar	Cedrus deadora	Evergreen	67	39	17	Healthy, slight lean minor surface roots	
W-80	Deador Cedar	Cedrus deadora	Evergreen	50	22	10	Narrow and high branching, otherwise healthy	
W-81	Weeping Willow	Salix babylonica	Deciduous	48	39	17	Surface roots, some dead branches, otherwise healthy	
W-82	Valley Oak	Quercus lobata	Deciduous	17	8	2	Trunk damage at base	
W-83	Valley Oak	Quercus lobata	Deciduous	17	8	2	Slight lean, but still young, damage at trunk base	Probably should be replaced due to the damage at base of trunk
W-84	Valley Oak	Quercus lobata	Deciduous	14	8	1	Significant trunk damage and pests at base	
W-85	Valley Oak	Quercus lobata	Deciduous	20	11	4	Some damage at base of trunk, needs pruning and shaping to remove multi-leaders and train one main trunk	
W-86	Valley Oak	Quercus lobata	Deciduous	17	11	2	Some minor damage to trunk base	
W-87	Pine	Pinus	Evergreen	4	4	1	Very young	